

New RG-ES0/ES100 Series Unmanaged Switch Family

DATASHEET

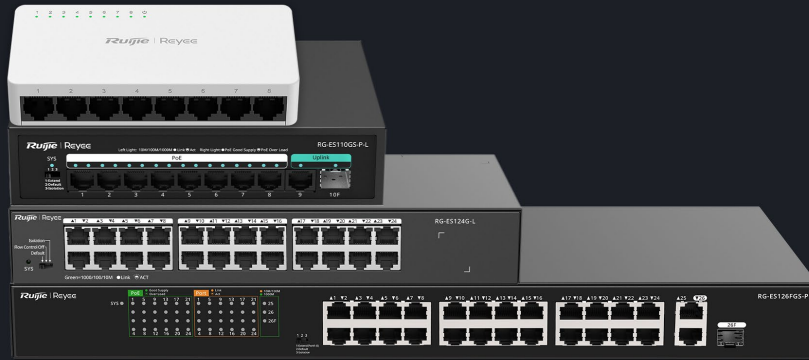


Highlights

- Visible on Ruijie Cloud Even Unmanaged
- Intelligent and Secure CCTV Network
- Intelligent PoE Management
- High-Quality Design

Highlight Features

New RG-ES0 RG-ES100 Series Unmanaged switch



Plug & play



Max. 30W on Each Port



3 Years Warranty



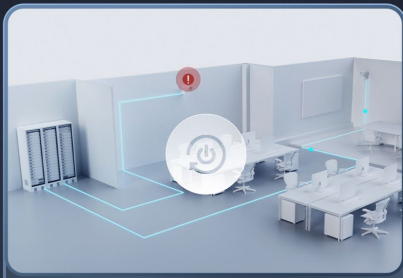
Energy Saving

Unmanaged Switch, Which Is Visible on Ruijie Cloud*

*If an unmanaged switch needs to be visualized on Ruijie Cloud, at least one managed switch needs to be deployed on the same network



Intelligent and Secure CCTV Network



Watchdog



Extend Mode



Port Isolation



PoE Auto Recovery



250 Meters Transmission



Flexible Extend mode



Higher security

Highlight Features

Intelligent PoE Management

Fit for various powered devices up to 30W

Wall AP
802.3af

IP Camera
802.3af

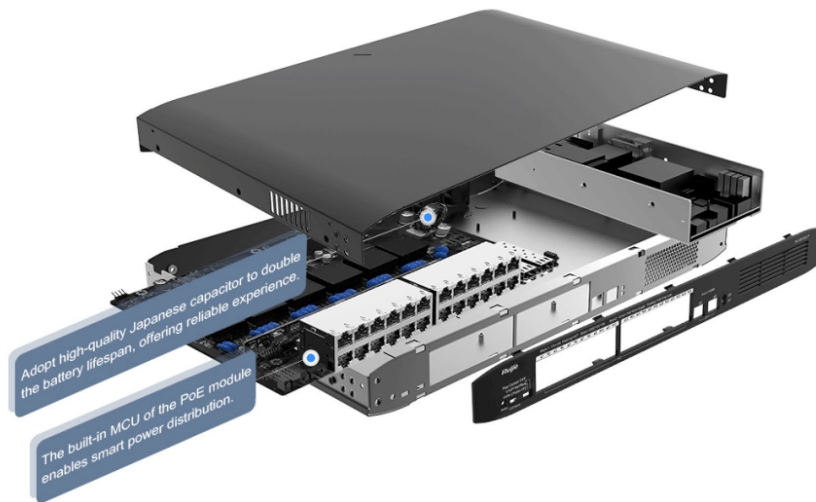
Ceiling AP
802.3at

IP PTZ Camera
802.3at

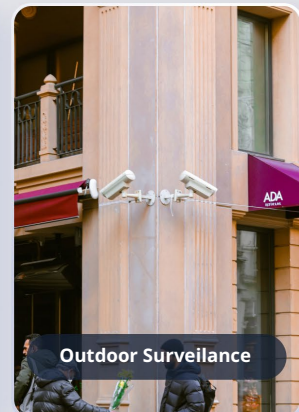


Better Quality Design

Strict standards in PCB design and component selection



Designed for Various Scenarios



Specifications

Basic

| Specification | RG-ES05F | RG-ES08F | RG-ES05G-L | RG-ES08G-L | RG-ES116G-L | RG-ES124G-L | RG-ES106F-P |
|------------------------|----------------------------|---------------------------|----------------------------|---------------------------|------------------------------|------------------------------|------------------------------|
| Downlink Ports | 5 x 10/ 100BASE-T | 8 x 10/ 100BASE-T | 5 x 10/100/ 1000BASE-T | 8 x 10/100/ 1000BASE-T | 16 x 10/100/ 1000BASE-T | 24 x 10/100/ 1000BASE-T | 4 x 10/ 100BASE-T |
| Uplink Ports | - | - | - | - | - | - | 2 x 10/100BASE-T |
| PoE/PoE+ Ports | - | - | - | - | - | - | 4 |
| Max. PoE Budget | - | - | - | - | - | - | 54 W |
| Layer Type | Unmanaged | Unmanaged | Unmanaged | Unmanaged | Unmanaged | Unmanaged | Unmanaged |
| Switching Capacity | 1 Gbps | 1.6 Gbps | 10 Gbps | 16 Gbps | 32 Gbps | 48 Gbps | 1.2 Gbps |
| Forwarding Rate | 0.744 Mpps | 1.19 Mpps | 7.44 Mpps | 11.9 Mpps | 23.8 Mpps | 35.7 Mpps | 0.89 Mpps |
| MAC Address Table Size | 2000 | 2000 | 2000 | 4000 | 8000 | 8000 | 2000 |
| Dimensions (W x D x H) | 85 mm x 52 mm x 23.5 mm | 124 mm x 60 mm x 24 mm | 85 mm x 52 mm x 23.5 mm | 124 mm x 60 mm x 24 mm | 280 mm x 125 mm x 43.6 mm | 280 mm x 125 mm x 43.6 mm | 166 mm x 132.6 mm x 43 mm |
| Weight (With package) | 0.21 kg | 0.25 kg | 0.22 kg | 0.27 kg | 1.78 kg | 1.86 kg | 0.96 kg |
| Warranty | 3 years | 3 years | 3 years | 3 years | 3 years | 3 years | 3 years |

Software Features

| | | | | | | | |
|------------------------------------|---|---|---|---|---|---|---|
| Auto/Full-/Half-Duplex Negotiation | ✓ | ✓ | ✓ | ✓ | ✓ | ✓ | ✓ |
| Auto MDI/MDIX | ✓ | ✓ | ✓ | ✓ | ✓ | ✓ | ✓ |
| PoE Watchdog Interval | - | - | - | - | - | - | ✓ |

Hardware Features

| | | | | | | | |
|----------------|---|---|---|---|---|---|---|
| Reset Button | - | - | - | - | - | - | - |
| Flow Control | - | - | - | - | ✓ | ✓ | ✓ |
| Port Isolation | - | - | - | - | ✓ | ✓ | ✓ |

Specifications

Basic

| Specification | RG-ES110F-P | RG-ES110FG-P | RG-ES110GS-P-L | RG-ES118FGS-LP | RG-ES118GS-P-L | RG-ES126FGS-LP | RG-ES126FGS-P |
|------------------------|---------------------------|---------------------------|---|---|---------------------------|--|--|
| Downlink Ports | 8 x 10/100BASE-T | 8 x 10/100BASE-T | 8 x 10/100/1000BASE-T | 16 x 10/100BASE-T | 16 x 10/100/1000BASE-T | 24 x 10/100BASE-T | 24 x 10/100BASE-T |
| Uplink Ports | 2 x 10/100BASE-T | 2 x 10/100/1000BASE-T | 1 x 10/100/1000BASE-T 1 x 1000BASE-X SFP | 2 x 10/100/1000BASE-T with 2 Combo ports | 2 x 1000BASE-X SFP | 2 x 10/100/1000BASE-T with 1 Combo port | 2 x 10/100/1000BASE-T with 1 Combo port |
| PoE/PoE+ Ports | 8 | 8 | 8 | 16 | 16 | 24 | 24 |
| Max. PoE Budget | 110 W | 110 W | 120 W | 120 W | 247 W | 180 W | 370 W |
| Layer Type | Unmanaged | Unmanaged | Unmanaged | Unmanaged | Unmanaged | Unmanaged | Unmanaged |
| Switching Capacity | 2.0 Gbps | 5.6 Gbps | 20 Gbps | 7.2 Gbps | 36 Gbps | 8.8 Gbps | 8.8 Gbps |
| Forwarding Rate | 1.48 Mpps | 4.17 Mpps | 14.8 Mpps | 5.35 Mpps | 26.8 Mpps | 6.55 Mpps | 6.55 Mpps |
| MAC Address Table Size | 8000 | 8000 | 4000 | 8000 | 8000 | 8000 | 8000 |
| Dimensions (W x D x H) | 166 mm x 132.6 mm x 43 mm | 166 mm x 132.6 mm x 43 mm | 190 mm x 150 mm x 43 mm | 440 mm x 214.9 mm x 44 mm | 440 mm x 214.9 mm x 44 mm | 440 mm x 214.9 mm x 44 mm | 440 mm x 214.9 mm x 44 mm |
| Weight (With package) | 1.22 kg | 1.22 kg | 1.44 kg | 3.0 kg | 3.78 kg | 3.2 kg | 3.78 kg |
| Warranty | 3 years | 3 years | 3 years | 3 years | 3 years | 3 years | 3 years |

Software Features

| | | | | | | | |
|------------------------------------|---|---|---|---|---|---|---|
| Auto/Full-/Half-Duplex Negotiation | ✓ | ✓ | ✓ | ✓ | ✓ | ✓ | ✓ |
| Auto MDI/MDIX | ✓ | ✓ | ✓ | ✓ | ✓ | ✓ | ✓ |
| PoE Watchdog Interval | ✓ | ✓ | ✓ | ✓ | ✓ | ✓ | ✓ |

Hardware Features

| | | | | | | | |
|----------------|---|---|---|---|---|---|---|
| Reset Button | - | - | - | - | - | - | - |
| Flow Control | ✓ | ✓ | ✓ | ✓ | ✓ | ✓ | ✓ |
| Port Isolation | ✓ | ✓ | ✓ | ✓ | ✓ | ✓ | ✓ |

Package Contents

| Device | RG-ES05F | RG-ES08F | RG-ES05G-L | RG-ES08G-L | RG-ES116G-L | RG-ES124G-L | RG-ES106F-P |
|--------------------------------|--------------------------|--------------------------|--------------------------|--------------------------|--|--|-------------------------|
| Device | ✓ | ✓ | ✓ | ✓ | ✓ | ✓ | ✓ |
| Power Supply | ✓ | ✓ | ✓ | ✓ | Power cable | Power cable | Power cable |
| User Manual | ✓ | ✓ | ✓ | ✓ | ✓ | ✓ | ✓ |
| Warranty Card | ✓ | ✓ | ✓ | ✓ | ✓ | ✓ | ✓ |
| Accessories | - | - | - | - | Mounting bracket * 2, Rubber foot * 4, Screw * 6 | Mounting bracket * 2, Rubber foot * 4, Screw * 6 | - |
| Package Weight | 0.21 kg | 0.25 kg | 0.22 kg | 0.27 kg | 1.78 kg | 1.86 kg | 0.96 kg |
| Package Dimensions (L x W x H) | 168 mm x 82.2 mm x 58 mm | 207 mm x 82.2 mm x 58 mm | 168 mm x 82.2 mm x 58 mm | 207 mm x 82.2 mm x 58 mm | 327 mm x 232 mm x 66 mm | 327 mm x 232 mm x 66 mm | 188 mm x 200 mm x 58 mm |

| Device | RG-ES110F-P | RG-ES110FG-P | RG-ES110GS-P-L | RG-ES118FGS-LP | RG-ES118GS-P-L | RG-ES126FGS-LP | RG-ES126FGS-P |
|--------------------------------|-------------------------|-------------------------|-------------------------|---------------------------------|--|---------------------------------|---------------------------------|
| Device | ✓ | ✓ | ✓ | ✓ | ✓ | ✓ | ✓ |
| Power Supply | Power cable | Power cable | Power cable | Power cable | Power cable | Power cable | Power cable |
| User Manual | ✓ | ✓ | ✓ | ✓ | ✓ | ✓ | ✓ |
| Warranty Card | ✓ | ✓ | ✓ | ✓ | ✓ | ✓ | ✓ |
| Accessories | - | - | - | Mounting bracket * 2, Screw * 6 | Mounting bracket * 2, Rubber foot * 4, Screw * 6 | Mounting bracket * 2, Screw * 6 | Mounting bracket * 2, Screw * 6 |
| Package Weight | 1.22 kg | 1.22 kg | 1.44 kg | 3.0 kg | 3.78 kg | 3.2 kg | 3.78 kg |
| Package Dimensions (L x W x H) | 188 mm x 200 mm x 58 mm | 188 mm x 200 mm x 58 mm | 214 mm x 223 mm x 58 mm | 547 mm x 306 mm x 114 mm | 547 mm x 306 mm x 114 mm | 547 mm x 306 mm x 114 mm | 547 mm x 306 mm x 114 mm |

Ruijie | Rcycc

 **Redefine your easy network**

Copyright ©2000-2024 Ruijie Networks Co., Ltd. All rights reserved.

No part of this document may be reproduced or transmitted in any form or any means without prior written consent of Ruijie Networks Co., Ltd.

Notice

This content is applicable only to regions outside the China mainland. Ruijie Networks Co., Ltd. reserves the right to interpret this content.

The information contained herein is subject to change without notice. Nothing herein should be construed as constituting an additional warranty. Ruijie Networks Co., Ltd. shall not be liable for technical or editorial errors or omissions contained herein.



Ruijie Networks Co., Ltd.
Website: <https://www.ruijienetworks.com>