

RG-RAP2266

Reyee Wi-Fi 6 AX3000 Indoor Ceiling-Mount Access Point

DATASHEET



Highlights

- Dual-radio performance, gigabit wireless Ceiling-mounted AP
- Capable of Reyee Mesh and 802.11K/V
- Easy installation, rotating and done
- New circular aesthetics, more in line with the hotel decoration style
- Powerful Standalone Portal via Ruijie Cloud



Highlight Features

Wi-Fi AX3000 Dual-band Round Ceiling AP

RG-RAP2266



Seamless Roaming, Ever Smart Like This

Smart AI Roaming, Based on Cloud Algorithm and Technology of 802.11k/v, Guaranteed Smooth and Lag-Free Internet



Installation With Rotating, Quick and Easy



Highlight Features

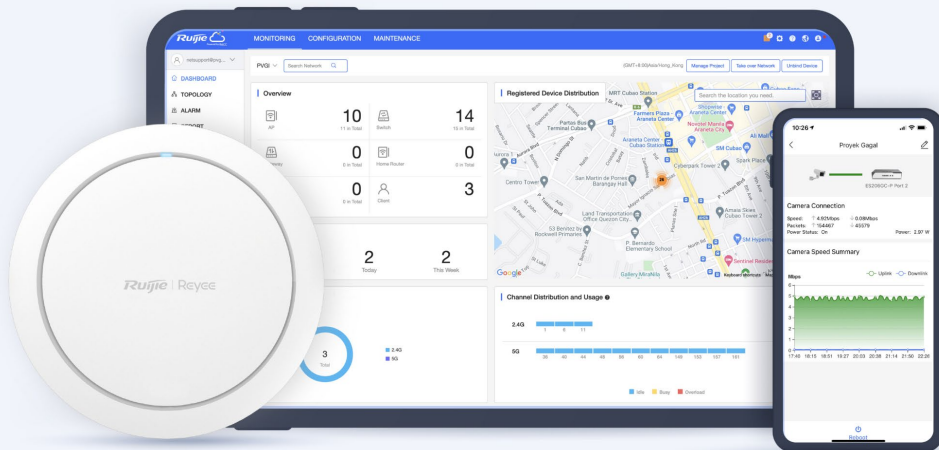
Easily Install Extra AP with Reye Mesh

Less wiring, more relaxing



Cloud, Make Your Business Easy

- Self-organizing network
- Cloud portal authentication
- Remote monitoring and maintenance
- Upgrade firmware via Cloud
- APP library dynamically update



Specifications

Basic Features

| | |
|-----------------------------------|---|
| Wi-Fi Standards | Wi-Fi6 (IEEE 802.11ax) Wi-Fi5 (IEEE 802.11ac Wave 2) Wi-Fi4(IEEE 802.11n) IEEE 802.11a IEEE 802.11b/g |
| MIMO | 2.4GHz, 2×2 ,MU-MIMO 5GHz, 2×2 ,MU-MIMO |
| Max. Wi-Fi Speed | 2.4GHz: 574Mbps 5GHz: 2402Mbps |
| Antenna | 5 |
| Antenna Type | Built-In Omnidirectional |
| Antenna Gain | 2.4 GHz:3.53dBi 5 GHz:5.15dBi Note The peak gain mentioned above refers to the gain of a single antenna. |
| Transmit Power | EIRP: ≤31dBm (2.4GHz) ≤32.7dBm (5GHz) country-specific restrictions apply Myanmar: 2400 MHz~2483.5 MHz ≤ 20 dBm 5150 MHz~5350 MHz ≤ 23 dBm 5470 MHz~5850 MHz ≤ 25 dBm Thailand: 2400 MHz~2483.5 MHz ≤ 20 dBm 5150 MHz~5350 MHz ≤ 23 dBm 5470 MHz~5725 MHz ≤ 25 dBm 5725 MHz~5850 MHz ≤ 30 dBm |
| Fixed Ports | 1×10/100/1000 Base-T port 1xDC port 1×Reset button |
| Max. Clients | 512 |
| Recommended Clients | 110 |
| Max. SSIDs | 8 |
| Recommended Wi-Fi Coverage Radius | 2.4GHz: 40 meters 5GHz: 70 meters The Wi-Fi coverage is related to the installation environment of the access point. |

Specifications

Basic Features

| | |
|----------------------------|---|
| Max. Wi-Fi Coverage Radius | 150 meters |
| Operation Frequency Bands | 802.11b/g/n/ax: 2.400 GHz to 2.4835 GHz 802.11a/n/ac/ax: 5.150 GHz to 5.350 GHz, 5.470 GHz to 5.725 GHz , 5.725 GHz to 5.850 GHz country-specific restrictions apply |

Software Features

WLAN Basic Features

| | |
|--|---|
| Power Adjustment | ✓ |
| Frequency Bandwidth | 2.4 GHz: Auto/20/40 MHz 5 GHz: Auto/20/40/80/160 MHz |
| Roaming | Layer 2 roaming Layer 3 roaming |
| OFDMA | ✓ |
| Beamforming | ✓ |
| Target wake time (TWT)* | Not Support |
| WMM | ✓ |
| Radar Signal Detection and Frequency Hopping (DFS) | ✓ |

WLAN Security

| | |
|------------------------------|----------------------------------|
| Wi-Fi Password | 16 bits |
| Security Mode | WPA-PSK, WPA2-PSK, WPA/WPA2-PSK; |
| Blacklist and Whitelist | ✓ |
| Prevent Fragmentation Attack | Not Support |
| Prevent ICMP Attack | Not Support |

Enhanced User Experience

| | |
|--------------------|---|
| Wi-Fi Optimization | ✓ |
| STA Limit | ✓ |

Specifications

Software Features

| | |
|---|---|
| Removing Low-RSSI STAs | ✓ |
| Adjusting Sending Rate of Beacon and Probe Response | ✓ |
| Syslog Recording Why Users Lose Connection | ✓ |
| Auto Channel and Power Adjustment on Cloud | ✓ |
| RSSI Threshold for STA Access | ✓ |
| Load Balancing | ✓ |

Networks

| | |
|---------------------------------------|--|
| Network Access Mode | PPPoE Client DHCP Client Static IP |
| Avoidance of WAN IP Address Conflicts | Not Support |
| VLAN | ✓ |
| DHCP Server | ✓ |

System

| | |
|-------------------------|---|
| Cloud Management | ✓ |
| APP Management | ✓ |
| APP Upgrade | ✓ |
| APP Restart | ✓ |
| Scheduled Restart | ✓ |
| Default Access/Password | 10.44.77.253 No Password Required by Default |
| Local Upgrade | ✓ |
| Online Upgrade | ✓ |
| Backup | ✓ |

Specifications

Hardware Features

| | |
|---------------|--------------------|
| Factory Reset | ✓ |
| Language | Chinese English |
| System Log | ✓ |
| Diagnostics | ✓ |
| Network Check | ✓ |

Physical

| | |
|---|---|
| LED Indicator | 1× system LED indicator |
| Buttons | 1×Reset button |
| Dimensions (W × D × H) | 220 mm x 220 mm x 52.6 mm (8.66 in. x 8.66 in. x 2.07 in., without the mounting bracket) |
| Weight | ≤ 0.5 kg (Without Mounting Bracket) |
| DC Port Dimensions | Outer Diameter: 6.3 mm Inner Diameter: 2.0 mm Length: 9.8 mm |
| Installation | Ceiling-Mountable |
| Mounting Bracket Dimensions (W × D × H) | 113.5 mm x 113.5 mm x 13.5 mm |
| Mounting Hole Pattern | 80 mm |
| Mounting Hole Diameter | 6.5 mm |
| Pole Diameter | NA |
| Power Supplies | IEEE 802.3at PoE DC 12V/2A |
| Power Consumption | ≤ 18W |
| PoE Power Budget | NA |

Environment

| | |
|-----------------------|-------------|
| Operating Temperature | 0°C to 40°C |
|-----------------------|-------------|

Specifications

Environment

| | |
|------------------------|-------------------------|
| Storage Temperature | -40°C to 70°C |
| Operating Humidity | 5% to 95% Noncondensing |
| Storage Humidity | 5% to 95% Noncondensing |
| IP(Ingress Protection) | NA |
| Port Surge | +/-2kV |
| MTBF | >400000H |

Ordering Information

| Model | Description |
|------------|---|
| RG-RAP2266 | AX3000 indoor ceiling-mount access point, dual-stream and dual-radio; providing one GE port; supporting IEEE 802.3at PoE power supply or DC local power supply (not included). |

Ruijie | Rcycc

 **Redefine your easy network**

Copyright ©2000-2023 Ruijie Networks Co., Ltd. All rights reserved.

No part of this document may be reproduced or transmitted in any form or any means without prior written consent of Ruijie Networks Co., Ltd.

Notice

This content is applicable only to regions outside the China mainland. Ruijie Networks Co., Ltd. reserves the right to interpret this content.

The information contained herein is subject to change without notice. Nothing herein should be construed as constituting an additional warranty. Ruijie Networks Co., Ltd. shall not be liable for technical or editorial errors or omissions contained herein.



Ruijie Networks Co., Ltd.
Building 19, Juyuanzhou Industrial Park, No.618
Jinshan Road, Cangshan District, Fuzhou, Fujian, China
Website: <https://www.ruijienetworks.com>